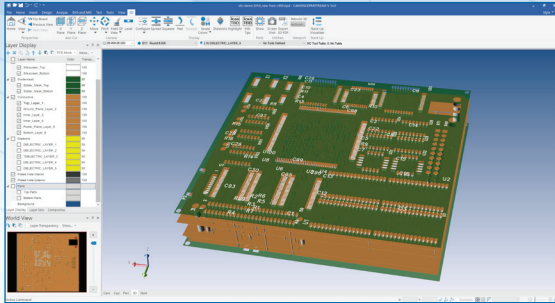
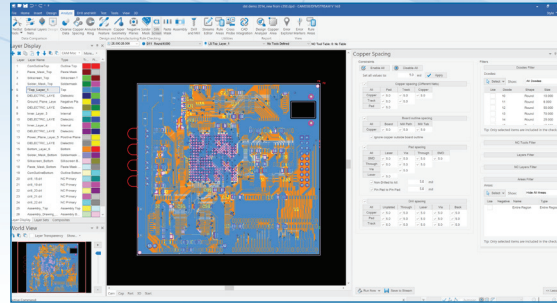


# CAM350®

## DATASHEET



*Visualize PCB construction intent using rich 3D modeling of CAM data.*



*Streamlined design rule check quickly checks Gerber and drill files to eliminate PCB scrap.*

CAM350 is the industry de facto standard for verification, optimization and output generation to efficiently and effectively drive PCB fabrication. Now with 3D technology, a completely restructured GUI, and a common database among all DownStream products, CAM350 has been revolutionized.

- Gerber Data Viewing / Editing
- Data Optimization
- Netlist / Layer Comparison
- PCB Fabrication Panel
- Stencil and Mask Generation
- Gerber/Drill/Mill Generation
- Bare Board Test
- Visualize 2D CAM Data as a 3D PCB
- Common Database Results in Seamless Communication Between all DownStream Products

## Importance of Post Processing

Inspecting, preparing and validating a PCB design prior to release to manufacturing will ease the transition of the design into production. PCB design preparation can eliminate delays by understanding the design complexities and fabrication requirements upfront. Having the design manufacturing-ready will result in increased efficiency, less risk of design re-spin, and most importantly, successful electronic products, built faster, at less cost.

## Streamlining the Transition of Engineering Data into PCBs

CAM350 prepares and optimizes design files for fabrication, from data input through analysis, test, mill and drill, to final bare-board production. Utilizing CAM350 to manage these functions will result in an automated, highly effective process.

- Seek out and repair manufacturability flaws located in the design
- Create NC files quickly and accurately
- Optimize the drill and mill machine performance
- Streamline tooling with panelization functionality
- Extract essential data to drive test equipment
- Optimize test machine performance and probing time
- Identify collisions, break-outs, and un-probable conditions

## The Benefits

Complications during fabrication lead to production delays, increased time and labor expense, resulting in decreased profitability. CAM350 can safeguard against these setbacks. CAM350 gives you the ability to effectively manage each operation while increasing productivity, reducing turn-around time, and ensuring top quality board output. If achieving new levels of speed, accuracy and excellence is your goal, CAM350 is your solution.